

# MONTHLY MEMBERSHIP PROGRESS REPORT

LOCATION INDIA

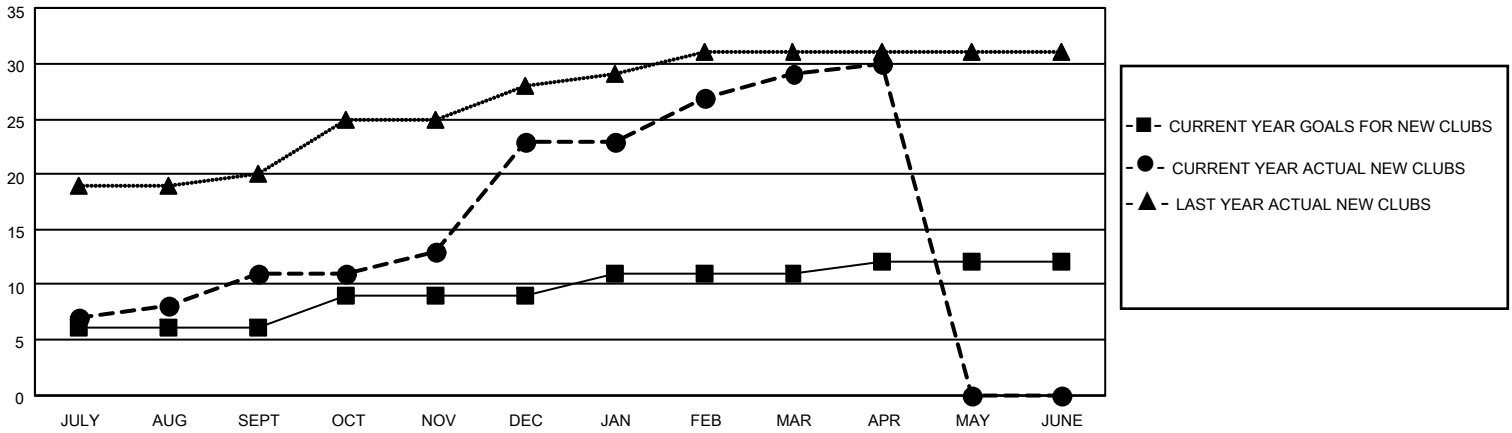
District 317 A

Results as of: 4/30/2021

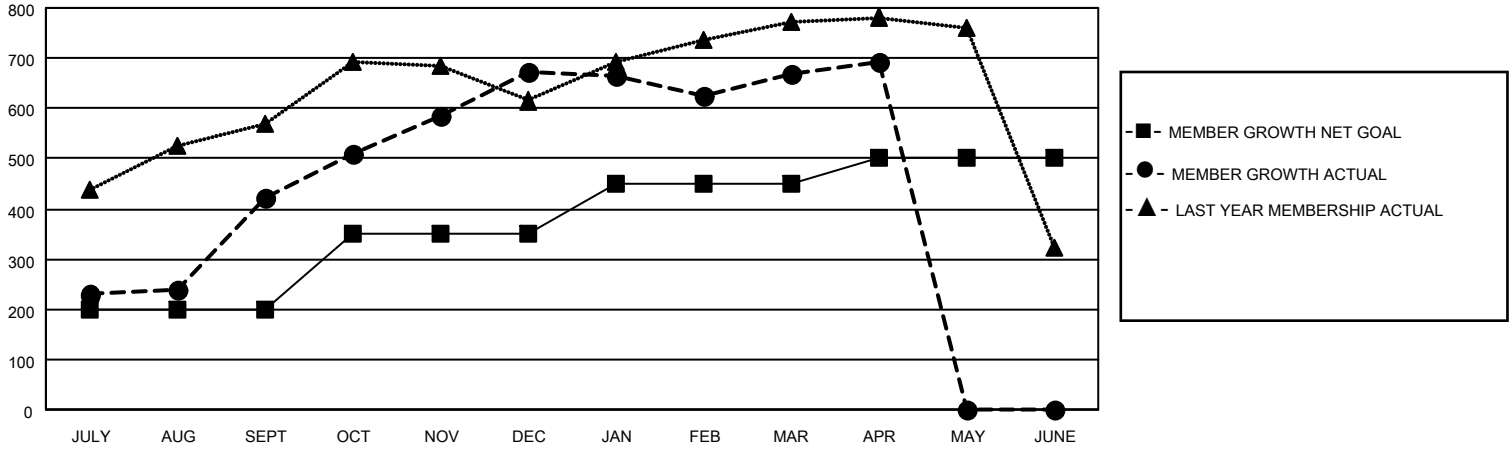
Clubs			
RESULTS FOR 2020-2021			
QUARTER	NEW CLUB GOAL	NEW CLUBS	DROPPED CLUBS
JULY/AUG/SEPT	6	11	0
OCT/NOV/DEC	3	12	0
JAN/FEB/MAR	2	6	17
APR/MAY/JUNE	1	1	0

Members			
RESULTS FOR 2020-2021			
QUARTER	MEMBER GROWTH NET GOAL	MEMBER GROWTH ACTUAL	DROPPED MEMBERS ACTUAL (including transfers)
JULY/AUG/SEPT	200	656	188
OCT/NOV/DEC	150	666	402
JAN/FEB/MAR	100	236	234
APR/MAY/JUNE	50	34	9

**GOALS AND ACTUAL NEW CLUBS CUMULATIVE**



**GOALS AND ACTUAL MEMBERS CUMULATIVE**



**DROPPED CLUBS: 17**

140 CLUBS OF 201 ADDED 1 OR MORE NEW MEMBERS

**GENDER DISTRIBUTION**

MALE 3,794 (65.88%)  
 FEMALE 1,965 (34.12%)

**DROPPED MEMBERS**

[CLICK HERE FOR CUMULATIVE MEMBERSHIP DATA](#)

DECEASED	17
CLUB CANCELLED	206
OTHER	610
<b>TOTAL</b>	<b>833</b>

TOTAL FAMILY UNIT MEMBERS	2,591
FAMILY MEMBERS PAYING HALF DUES	1,418